



# Stanley Middle School

Celebrating LPIE's 40 Years of  
Investing in Education



L A F A Y E T T E  
**PARTNERS IN  
EDUCATION**

from the first day to graduation day

2020-2021

# Impact through Partnership

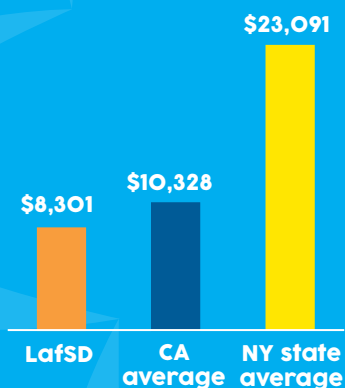
Being ranked as a top school district year after year does not happen by accident. Since 1980, the financial support from parents and community members to LPIE has been a sustained source of funding for our public schools.

This year, LPIE celebrates 40 years of investing in education. In the beginning, parents created the Lafayette Arts & Science Foundation and raised \$10,000 for the classrooms. Forty years later, now known as LPIE, the foundation donates millions of dollars each year. This dramatic growth and impact is because of you - the parents and community - who are our partners in education.

Why do our public schools need donations through a non-profit education foundation? In short schools are underfunded by the state. This school year, public school funding is facing its biggest challenge in years. Because of the health and economic crisis, the already insufficient state funding has been drastically reduced, which means LPIE is more critical than ever.

Please support the LPIE 2020-2021 Annual Giving Campaign by making your donation or pledge today. Our suggested donation amount is \$1,300 per student; however, we are grateful for any gift that is meaningful to your family.

## State Funding



*ed-data.org, empirecenter.org*



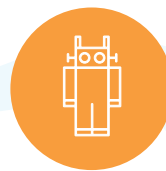
Together, we can make a significant difference in the educational opportunities for our children. Thank you.

## LPIE at Stanley

We invite you to be a partner in education by donating to LPIE.



## The impact of your support...



### Funding Electives

Sections in World Language, Music, Art, Wood Technology, Home Economics, Computers, and the Wheel.



### Powering Classrooms

Books, supplies and classroom libraries, cultural and historical art projects in World Language and 6th grade Core, Science units, and Music mentors and accompanists.



### Enriching Students' Experience

Counselors, wellness programs, math intervention, lunchtime clubs, homework help, and more to support students' academic, social, and emotional well-being.



### Providing Technology

Accessibility and support for every student and teacher through Chromebooks, equipment, and staff.

**\$4.3M goal**

**LPIE...from the first day to graduation day!**



## Please support LPIE's 2020-2021 Annual Giving Campaign.

**Our suggested donation is \$1,300/student.**

We are grateful for any gift that is meaningful for your family.

Donate when you register at [reghub.org](https://reghub.org). Or visit [www.lpie.org/donate-online](https://www.lpie.org/donate-online) to see the donation opportunities, including a single or monthly donation or pledge. Find out if your employer will double your donation at [www.lpie.org/matching-gifts](https://www.lpie.org/matching-gifts).

Together, we will continue the legacy of supporting our children's education. Thank you!



L A F A Y E T T E  
**PARTNERS IN  
EDUCATION**

from the first day to graduation day

[office@lpie.org](mailto:office@lpie.org) | 925.299.1644 | [www.lpie.org](https://www.lpie.org) | Tax ID#: 94-2699518